

QuickGene QuickGene Series **Application Guide**

DNA Isolation from Corbicula Clam

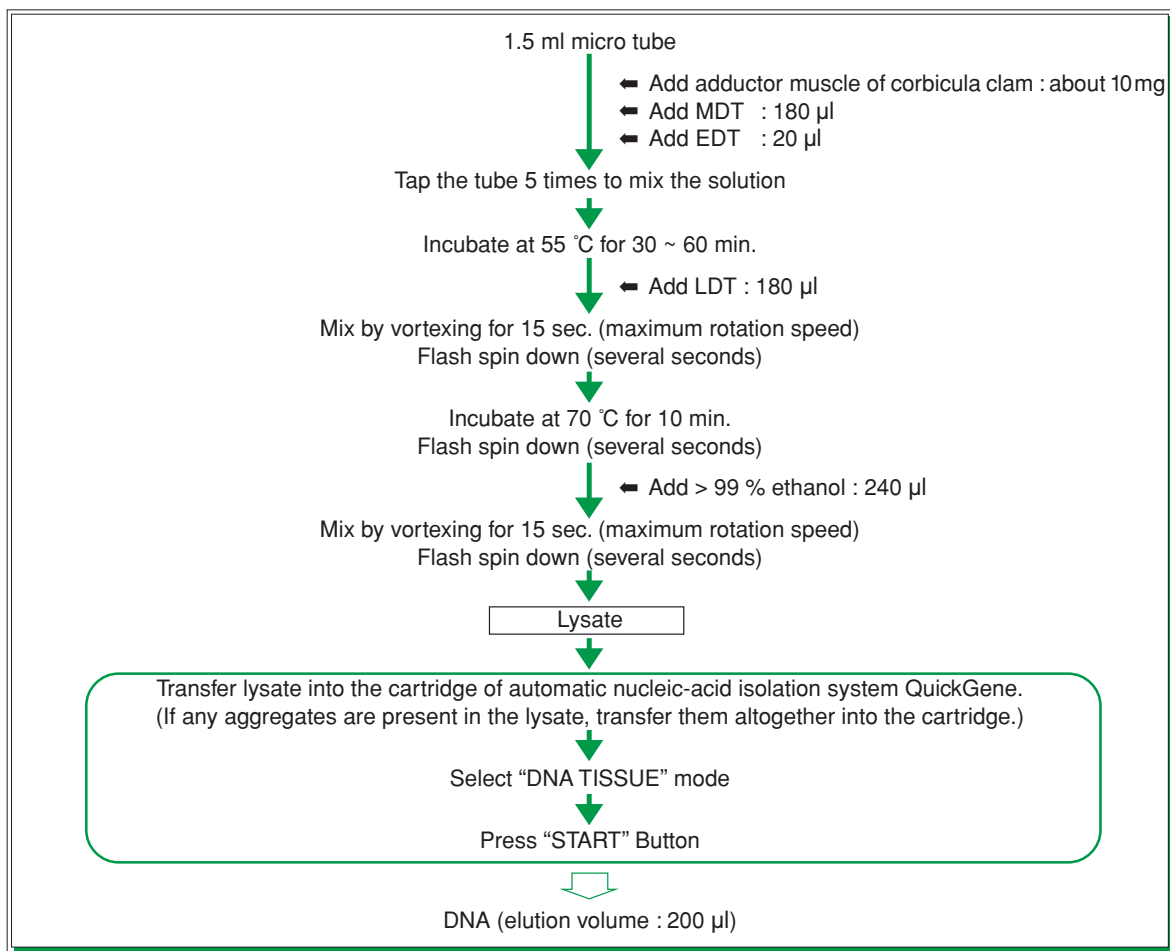
Kit : QuickGene DNA tissue kit S

Model : QuickGene-810

Summary

Enables easy and rapid isolation of mtDNA from adductor muscle of corbicula clam and discrimination between freshwater corbicula clam and brackish water corbicula clam (*Corbicula japonica*) by PCR and restriction enzyme digestion.

Protocol



* Perform isolation within 30 min. after lysate preparation.

Results : Isolation of DNA from adductor muscle of corbicula clam

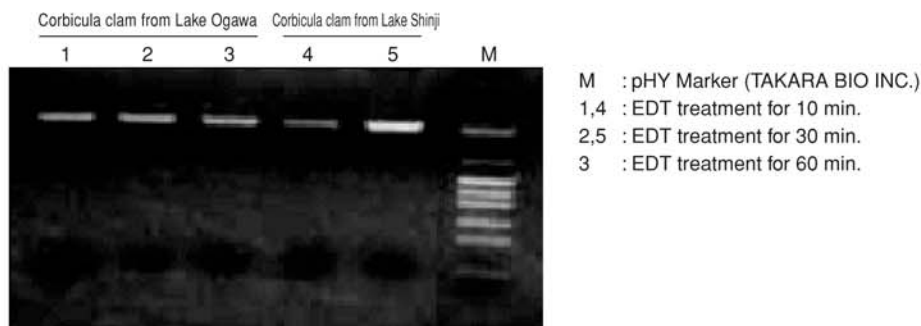
DNA was isolated from adductor muscle of corbicula clam using QuickGene system (QuickGene-810 and QuickGene DNA tissue kit S) .

1) PCR

● PCR performed on mtDNA isolated using QuickGene system

(example of examination for EDT treatment time)

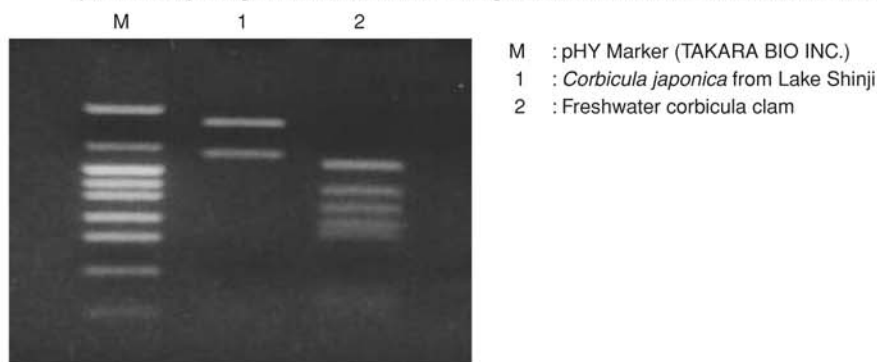
PCR amplification targeting about 5 Kbp over COI1 - 16S rRNA was performed by using mtDNA isolated from 10 mg of adductor muscle of corbicula clam with QuickGene system.



2) Restriction enzyme digestion

● Restriction enzyme digestion after PCR on mtDNA isolated using QuickGene system

Restriction enzyme (*Msp* I) digestion was performed, after PCR amplification targeting about 5 Kbp over COI1 - 16S rRNA was performed by using mtDNA isolated from 10 mg of adductor muscle of corbicula clam with QuickGene system.



Use of QuickGene system enables discrimination of corbicula clams by mtDNA isolated from adductor muscle of the clams.

Reference data : data of Corbicula Species Discrimination Technique Workshop, Farming Biology Division, National Research Institute of Aquaculture, Fisheries Research Agency

* Trade mark and exclusion item

Right to registered names etc used in this Application Guide is protected by law especially even in the case of no denotation.



North American Distributor
 www.autogen.com
 AutoGen, Inc. 84 October Hill Road Holliston, MA 01746
 Tel: 508.429.5965; Fax: 508.429.9765; E-mail: info@autogen.com