

**QuickGene** QuickGene Series **Application Guide**

## Genomic DNA Isolation from Yeast

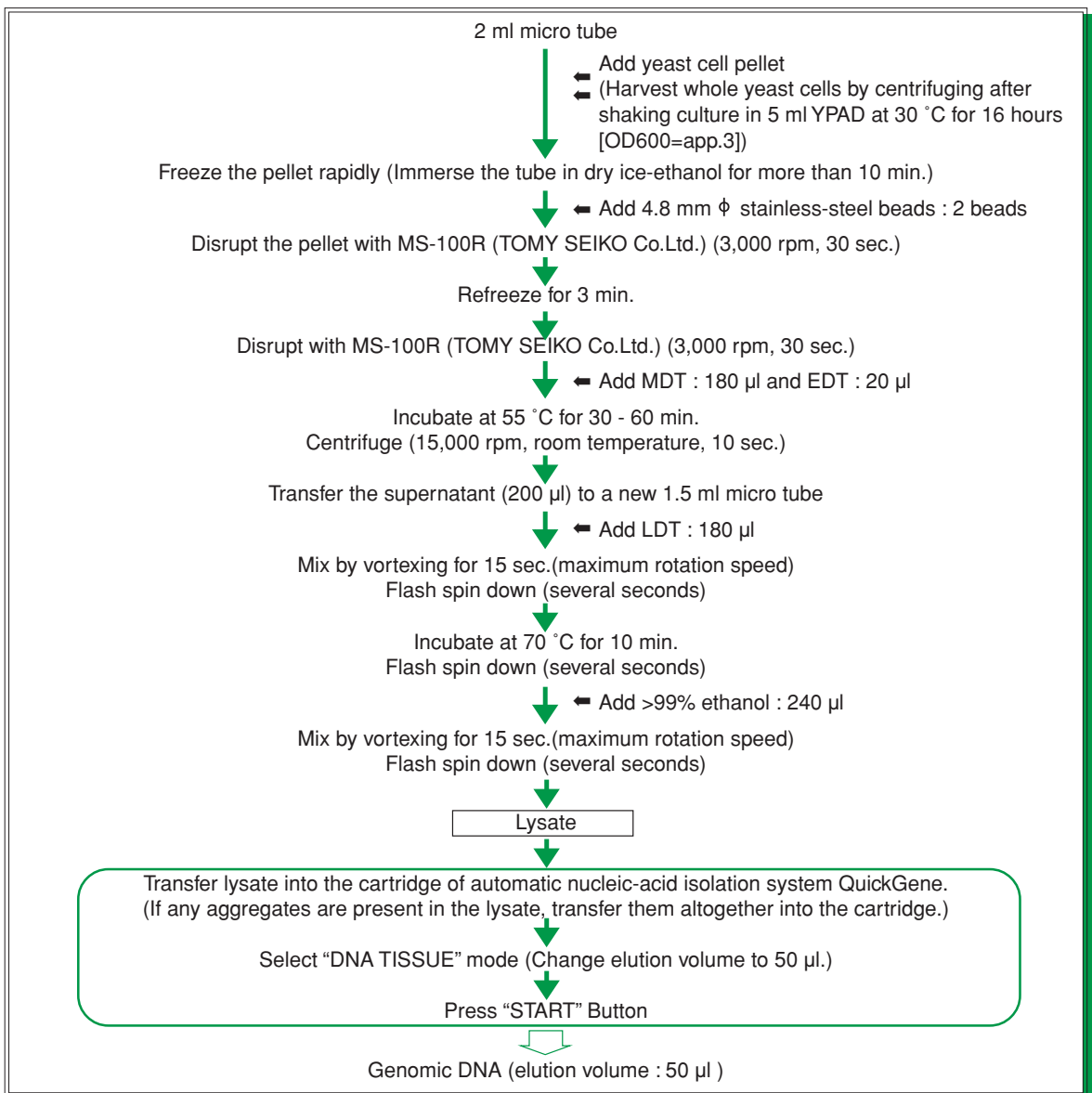
**Kit : QuickGene DNA tissue kit S**

**Model : QuickGene-810**

### Summary

Enables easy and rapid high-yield isolation of DNA from yeast (methylophilic yeast *Ogataea minuta*)

### Protocol



\* Perform isolation within 30 min. after lysate preparation.

## Results : Isolation of genomic DNA from yeast

Genomic DNA was isolated from methylotrophic yeast *Ogataea minuta* using QuickGene system (QuickGene-810 and QuickGene DNA tissue kit S).

Kind of yeast : methylotrophic yeast *Ogataea minuta*  
 Initial sample amount : 5 ml YPAD

↓

Shake culture at 30 °C for 16 hours (OD600=app.3)

↓

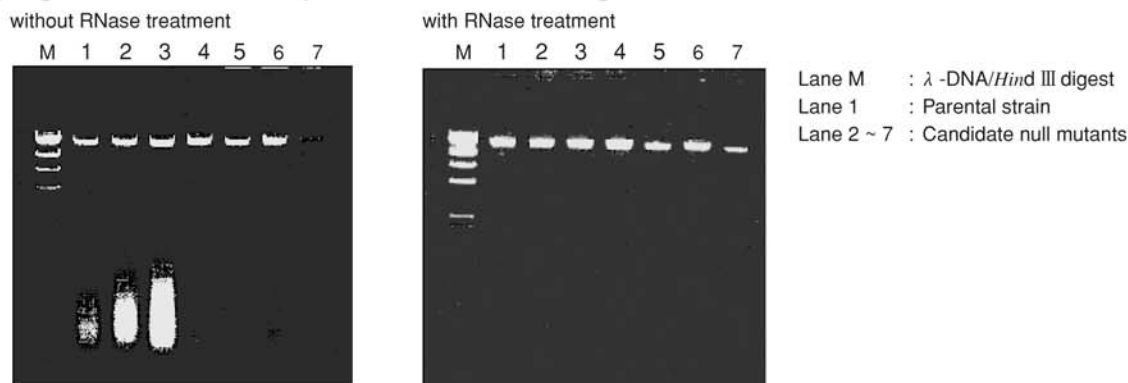
Harvest whole yeast cells by centrifuging

↓

genomic DNA (elution volume : 50 µl)

RNase treatment : genomic DNA : 1 µl  
 RNase (10 mg/ml) : 0.1 µl (final conc. 100 ng/ µl)  
 ↓  
 up to 10 µl with s.d.w.  
 37 °C, 15 min.

### 1) Agarose Gel Electrophoresis of isolated genomic DNA



### 2) The yield and purity of genomic DNA (without RNase treatment)

	Yield (µg)	Purity ( $A_{260/280}$ )
1	79.4	2.12
2	111.1	2.13
3	127.8	2.12
4	35.0	2.01
5	30.2	1.85
6	53.3	1.99
7	10.7	1.67

The use of QuickGene system enables the high-yield isolation of high-purity genomic DNA from yeast.

(Contributed by Glycobiosynthesis Team, Research Center for Glycoscience, National Institute of Advanced Industrial Science and Technology)

#### \* Trade mark and exclusion item

Right to registered names etc used in this Application Guide is protected by law especially even in the case of no denotation.



North American Distributor  
 www.autogen.com  
 AutoGen, Inc. 84 October Hill Road Holliston, MA 01746  
 Tel: 508.429.5965; Fax: 508.429.9765; E-mail: info@autogen.com