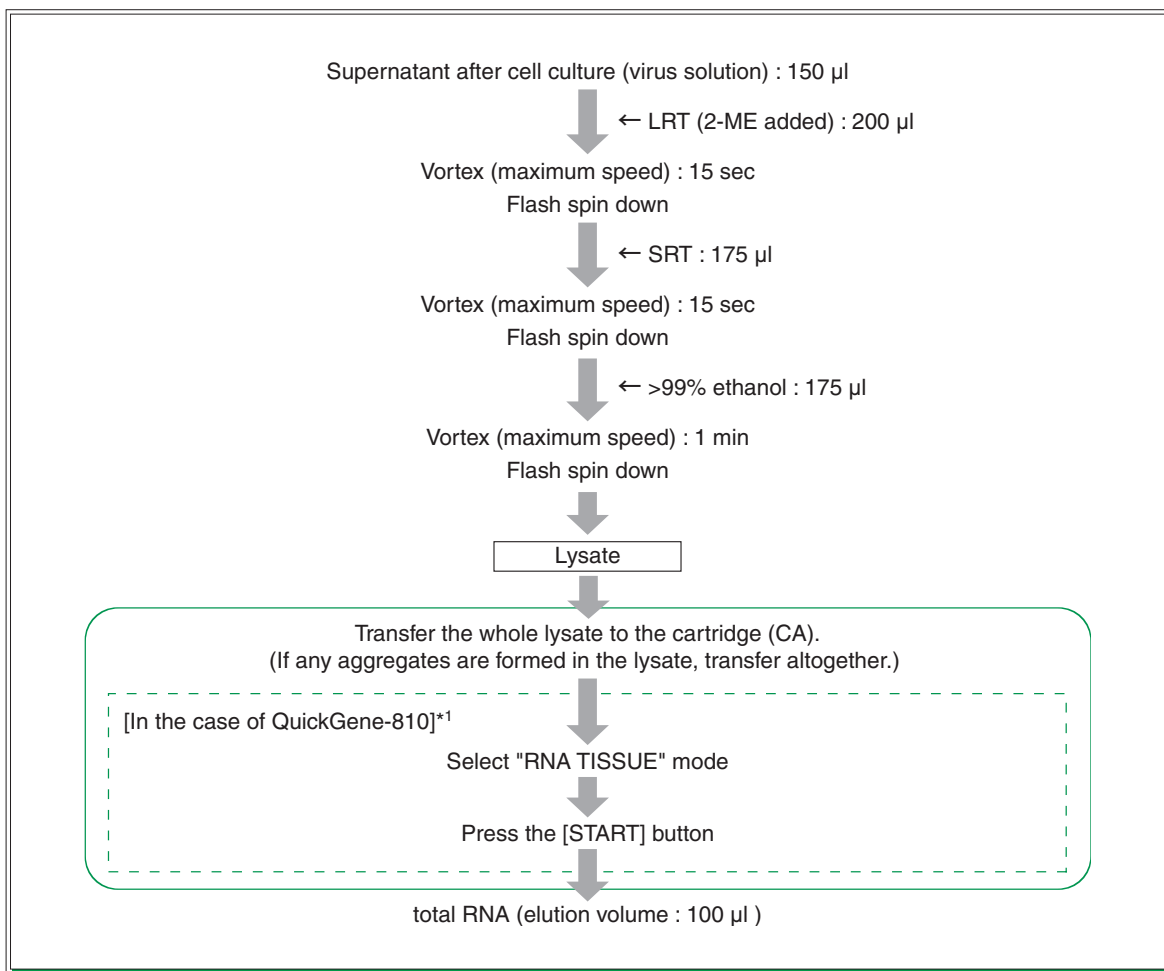


 QuickGene Series **Application Guide****total RNA Extraction from Measles Virus Solution**

Kit : QuickGene RNA tissue kit S II  
Model : QuickGene-810/QuickGene-Mini80

**Summary**

Enables easy and rapid total RNA extraction from measles virus solution

**● Protocol**

\*1 : In the case of QuickGene-Mini80, please refer to the Kit Handbook for details.

\* Perform extraction within 30 min after lysate preparation.

## Results : total RNA extraction from measles virus solution

total RNA was extracted from measles virus solution using QuickGene system (QuickGene and QuickGene RNA tissue kit S II ) and Spin column method (A company).

After culture of viral strain transmitted to the following cells, centrifuging was carried out, and the supernatant was used as virus solution.

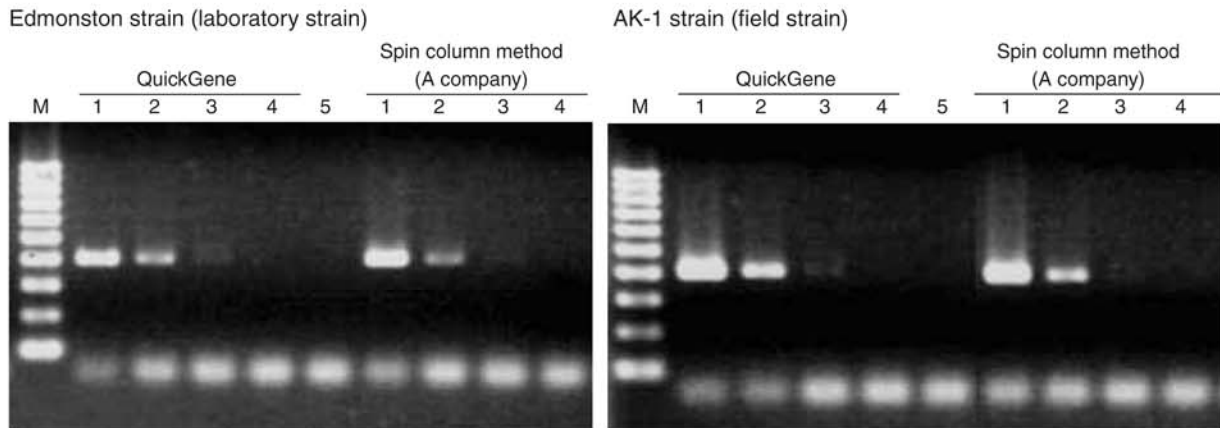
Viral strains Edmonston strain (laboratory strain) : cultured in DMEM added with 10% FBS after infection of Vero cells  
 AK-1 strain (field strain) : cultured in RPMI-1640 culture added with 10% FBS after infection of K562 cells

### ● The purity of total RNA

As absorbance at 280 nm was under detection limit for each total RNA, little contamination of protein is indicated.

### ● RT-PCR

RT-PCR was performed with viral hemagglutinin(HA)-specific primer for total RNA extracted from measles virus solution using QuickGene system and Spin column method (A company).



Electrophoresis condition : 2.0% agarose/1 x TAE

M: 100bp DNA Ladder  
 1 : Measles virus,  $10^5$  pfu/ml  
 2 : Measles virus,  $10^4$  pfu/ml  
 3 : Measles virus,  $10^3$  pfu/ml  
 4 : Measles virus,  $10^2$  pfu/ml  
 5 : Negative control

RT-PCR products of HA were detected for each total RNA.

#### \* Trademark and exclusion item

Right to registered names etc. used in this Application Guide is protected by law especially even in the case of no denotation.

# FUJIFILM



North American Distributor  
 www.autogen.com  
 AutoGen, Inc. 84 October Hill Road Holliston, MA 01746  
 Tel: 508.429.5965; Fax: 508.429.9765; E-mail: info@autogen.com